

# DORADO N70

NORDIC LIGHTS® Dorado N70 is a versatile tail light, combining tail, stop, and indicator lights all in one unit. The Dorado N70 can be mounted on most vehicles, and mounting is a snap since this is a telltale compatible light, just plug & play. The Dorado N70 is durable against both vibration and shock.

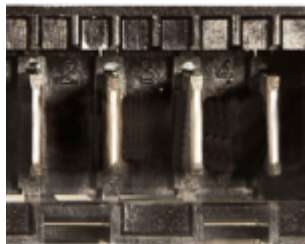


Not all products are available in all markets. During continuous improvement specifications and design are changing. All values are nominal values. Illustrations do not necessarily show the design of every version and some features are version specific. The lumens output varies depending on lens colour.

## TECHNICAL DATA

Nominal Voltage DC	12 V 24 V	Lens	PC
Input Voltage DC	8 - 32 V	Body / Housing	Aluminum
Power Consumption	Brake 1.4W, Indicator 1.4W, Tail 0.4W, Tell-tale 24V: Indicator 18W	Weight	0.4 kg
Nominal Current at 12V	Brake 116mA, Tail 34mA, Indicator 116mA	IP Rating	IP21
Nominal Current at 24V	Brake 58mA, Indicator 58mA, Tell-tale: Indicator 750mA, Tail 17mA	Salt Spray Test	ISO 9227 240H
Connector	4 pin Male Terminal 6.3 x 0.8	EMC	EN 12895, ISO 13766, ISO 14982, ISO 7637-2
Mount	M6x25 2pcs	Operating Temperatures	-40°C... +85°C (Overheat protected)
Shock	60G	Electronics	Isolated
Vibration	20Grms 24-2000Hz	Part Numbers	24V: 983-001B, 12V: 983-003B

## CONNECTORS



4 pin Male Terminal 6.3 x 0.8

## KEY FEATURES

- All-in-one
- Tell-tale compatible
- Plug & Play

## DRAWINGS

